



Topex[®] APF

-&-

Topex[®] Neutral pH Foam Fluoride

REF AD31150 – Topex[®] APF Foam Fluoride, Strawberry – 4.4oz/132mL
REF AD31151 – Topex[®] APF Foam Fluoride, Spearmint – 4.4oz/132mL
REF AD31152 – Topex[®] APF Foam Fluoride, Bubble Fun – 4.4oz/132mL
REF AD31153 – Topex[®] APF Foam Fluoride, Grape – 4.4oz/132mL
REF AD31154 – Topex[®] APF Foam Fluoride, Orange Dream – 4.4oz/132mL
REF AD31165 – Topex[®] Neutral pH Foam Fluoride, Mixed Berry – 4.4oz/132mL

For dental use only.

Made in USA.

Caution: U.S. Federal law restricts this device to sale by or on the order of a dentist.

1. DESCRIPTION

Topex[®] Foam Fluoride is a family of topical fluoride foam products intended for professional application in trays. The family consists of APF Foam (1.23% fluoride ion at a pH between 3.0-4.5) and Neutral pH Foam (0.9% fluoride ion at a pH between 6.5 -7.5). Topex[®] Foam Fluoride products do not contain chlorofluorocarbon propellants.

2. INDICATIONS

Topex[®] Foam Fluoride is indicated for topical application to teeth to aid in protection from dental caries.

3. CONTRAINDICATIONS

This product should not be used with individuals with known sensitivities to fluoride.

4. PRECAUTIONS

Use only as directed. For dental use only. Not for unsupervised home use. Safety and efficacy in patients under the age of 3 has not been established. Repeated use of APF formulations in patients with porcelain or composite restorations should be avoided due to the possibility of etching the restoration surface. Use Topex[®] Neutral pH Foam with patients who have porcelain and composite restorations.

5. WARNINGS

Do not swallow. Keep out of reach of children. For professional dental use only. Contents under pressure. Do not puncture or incinerate. Do not spray into an open flame.

6. DOSAGE AND ADMINISTRATION

1. Remove the cap from the can. If this is the first time using the can, break the protective shipping tab by gently lifting up on the trigger (see Figure 1).
2. Shake the can thoroughly for at least 10 seconds before each use.
3. Completely invert the can and slowly depress the trigger to dispense foam into a fluoride tray (see Figure 2). Note that the foam will slightly expand upon dispensing, so take precautions not to overfill the tray. Take care not to dispense the foam unless the can is completely inverted. Doing so will release excess propellant, leading to not being able to empty the can (see Figure 3).
4. Air dry the teeth thoroughly and insert the tray(s) into the patients mouth. Have the patient close into the trays and use a slight chewing motion to ensure interproximal coverage.
5. Leave the trays in contact with the teeth between 1-4 minutes. Use a saliva ejector during treatment to minimize the possibility of the patient swallowing the product.
6. Remove the trays after the elapsed time. Have the patient expectorate.
7. Instruct the patient to refrain from drinking, eating or rinsing for 30 minutes after treatment.

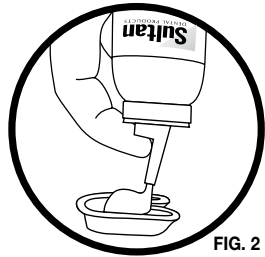
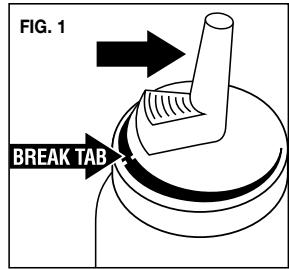


FIG. 2



FIG. 3

7. STORAGE

Do not store at temperatures above 120°F (49°C).
Protect from freezing.

Manufactured for:

Sultan Healthcare

Sultan Healthcare
1301 Smile Way • York, PA 17404-0807 • USA
Toll Free: 800-637-8582 • Phone: 201-871-1232
Fax: 201-871-0321 • www.sultanhealthcare.com

Made in the USA
0031111DF, R1-073114